

CANNABIS SCIENCE, INC.

CBIS GLOBAL ECONOMIC DEVELOPMENT PLAN



BRINGING IT ALL TOGETHER

Raymond C. Dabney

President & CEO, Co-Founder of Cannabis Science, Inc.
Board Member, Constituency for Africa (CFA)
Vice-Chair, CFA
Chairman of African Economic Development Committee, CFA
Chancellor, American States University (ASU)
Chairman, Raymond C. Dabney University (RCDU)

Dr. Julius Garvey

M.D., F.A.C.S., F.R.C.S.(C), F.I.C.S., F.A.C.Ph., F.A.C.C.W.S.

Chief Medical Officer, Cannabis Science, Inc.
President Scientific Advisory Board, Cannabis Science, Inc.
Founder & Medical Director, Garvey Vascular Specialists
Fellow, Royal College of Surgeons (Canada), American College of Surgeons, The American College of Phlebology, the International College of Surgeons, and the American College of Chest Physicians



BRINGING IT ALL TOGETHER

THE CBIS ECONOMIC DEVELOPMENT INITIATIVE IS DESIGNED TO CREATE ECONOMIES OF SCALE IN ANY DEMOGRAPHIC IN ANY CITY, SUBURB, AND COUNTRY.

THIS PLAN IS PROPELLED BY THE RESEARCH AND DEVELOPMENT OF CANNABINOID-BASED CLINICAL DRUGS FOR CRITICAL AILMENTS AND PALLIATIVE CARE.

THE CBIS ECONOMIC DEVELOPMENT PLAN ECO-CENTER

1. DRUG DEVELOPMENT

- FDA, State-By-State, Over the Counter markets for: Cancer, PTSD, Chronic Pain, Arthritis, Parkinson's Disease, Epilepsy, Autism, and HIV/AIDs.

2. EDUCATION

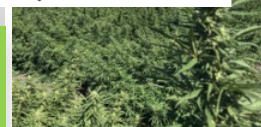
- Access to our consortium of affordable University programs, inclusive of scholarships and additionally subsidized education packages.

3. JOB CREATION

- Entrepreneurial programs and vertical integration including site creation, healthcare infrastructure, water & waste management infrastructure, technology & communications infrastructure, housing (apartments, dorms, etc.), and retail services.



BRINGING IT ALL TOGETHER



CBIS TEAM





CONSTITUENCY FOR AFRICA



"To build a base of support for Africa in the United States and throughout the African Diaspora"

- HEALTHCARE INFRASTRUCTURE
- FOOD SECURITY AND AGRICULTURE
- EDUCATION AND TRAINING
- TECHNOLOGY/TELECOMMUNICATIONS
- POLITICAL AND POLICY ENVIRONMENTS

1. CBIS DRUG DEVELOPMENT



CBIS' DRUG DEVELOPMENT PROGRAM:

1. Defining the effectiveness and specificity of cannabinoids.
2. Identifying and testing drug delivery mechanisms.
3. Testing and evaluating the impact of co-interventions, and the application of additional diagnostic and/or therapeutic procedures to participants in randomized controlled trials.



FDA

OVER THE COUNTER

STATE BY STATE

Doctor written prescriptions

Targeted Critical Ailments

Nutraceuticals

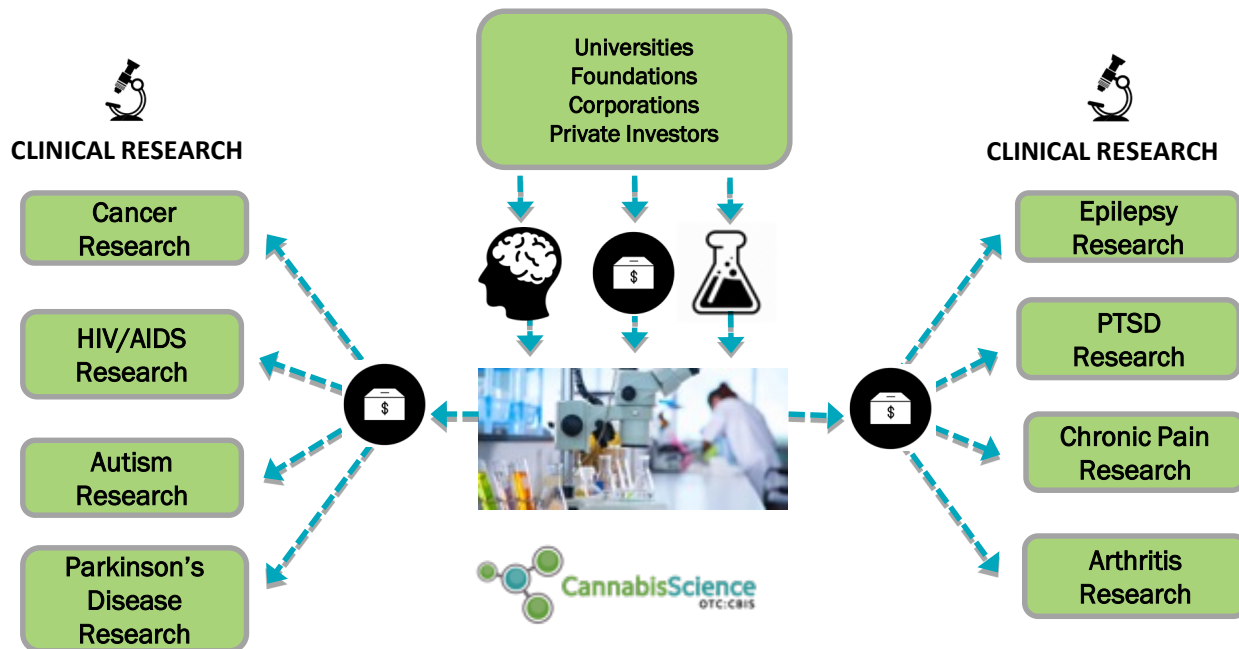
Cosmeceuticals

Regulation

Cultivation

Laboratory

CBIS MEDICAL CONSORTIUM



BRINGING IT ALL TOGETHER

CBIS PRODUCT PIPELINE

CLINICAL DRUG DEVELOPMENT



DRUG NAME	INDICATION & DESCRIPTION	GLOBAL MARKET / YEAR	% MARKET SHARE GOAL / YEAR	DISCOVERY	PRE-CLINICAL	PH. 1	PH. 2	PH. 3	DRUG REVIEW
CS-S / BCC-1	Extract Formulations - 2500% Stronger, Varied for Skin Cancers and Other Topical Indications - Arthritis, Muscle Pain, Wounds	\$4.7 Billion	\$47 Million	2008	2009/ 2010				
CS-TATI-1	Extract Formulations - 2500% Stronger, Varied for HIV/ AIDS, Cancers, and Other - Rheumatism, Wounds, Skin	\$26.5 Million	\$265 Thousand	2008	2010/ 2011				
CS-NEURO-1	Extract Formulation - 2500% Stronger, Varied CBD Patent Formulations for Neurological Disorders and Other Indications	\$28 Billion	\$280 Million	2008	2012/ 2013	Poss. 2019			
CBIS-LC-001	Stage 4 Lung Cancer	\$17.9 Billion	\$179 Million	2017	2015	Plan 2019			
CBIS-PC-001	Pancreatic Cancer	\$2 Billion	\$20 Million	2017	2016	Plan 2019			
CBIS-PPC-001	Chronic Prostatitis (Chronic Pelvic Pain)	\$8.81.5 Million	\$8.815 Million	2017	2015				
CBIS-OCD-001	Obsessive Compulsive Disorder	\$18.3 Billion	\$183 Million	2017	2018				
CBIS-OBLD-001	Oro-Bucco-Lingual Dyskinesias	\$1.1 Million	\$11 Thousand	2017	2018				
CBIS-OS-001	Oxidative Stress	\$615.69 Million	\$6.1569 Million	2017	2018	Poss. 2019			
CBIS-PS-001	Psychosis/ Anxiety	\$18.3 Billion	\$183 Million	2008	2018/ 19	Poss. 2019			
CBIS-PTSD-001	Post-Traumatic Stress Disorder (PTSD)	\$7.2 Billion	\$72 Million	2008	2018/ 19	Poss. 2019			
CBIS-SD-001	Sleep Deprivation	\$680.4 Billion	\$6.804 Billion	2008	2018/ 19	Poss. 2019			
CBIS-SSA-001	Sickle Cell Anemia	\$4.82 Billion	\$48.2 Million	2017	2018				
CBIS-GAP-001	Global Anemic Pandemic, World's Most Widespread Nutritional Disorder	\$21.4 Billion	\$214 Million	2017	2018				

CBIS PRODUCT PIPELINE

STATE-BY-STATE / INVENTORY LIST



PRODUCT	DESCRIPTION	DEVELOPMENT	MANUFACTURING	DISTRIBUTION	OBSERVATION
DELIVERY MODULE: CAPSULE					
CBIS HIGH THC	Non-GMO, Preservative Free 94.5% Total THC				
CBIS HIGH CBD	Non-GMO, Preservative Free 94.5% Total CBD				
CBIS THC CBD SOFT GEL	CBD:THC 1:1, 2:1, 14:1, 20:1				
CBIS CBD SOFT GEL	Medicinal Benefits of CBD				
CBIS THC+ SOFT GEL	Medicinal Benefits of THC				
CBIS CS-TATI-1	Pure extract formulation - 2500% stronger Varied formulations for Cancers, HIV/AIDS and Other				
CBIS CS-NEURO-1	Pure extract formulation - 2500% stronger Varied formulations for Neurological disorders and other				
FSO NAC POWERED BY CBIS PURE HEMP CBD	Non-GMO Industrial Hemp Oil, 25mg of Active Cannabinoids				
DELIVERY MODULE: TOPICAL, CREAM, LOTION, SOAP, SUPPOSITORY					
CBIS NECK AND WRIST CREAM	THC & Coconut Oil Pain Management				

CBIS PRODUCT PIPELINE

OVER THE COUNTER / INVENTORY LIST



PRODUCT	DESCRIPTION	DEVELOPMENT	MANUFACTURING	DISTRIBUTION	OBSERVATION
DELIVERY MODULE: CAPSULE					
CBIS HEMP CBD	Industrial Hemp CBD				
FSO NAC POWERED BY CBIS PURE HEMP CBD	Non-GMO Industrial Hemp Oil, 25mg of Active Cannabinoids				
DELIVERY MODULE: TOPICAL, CREAM, LOTION, SOAP, SUPPOSITORY					
CBIS LIP BLAM	Cannabis Sativa (Hemp Seeds Oil), Bees Wax, Cannabis Extract				
CBIS DERMIS	Hemp Lotion				
CBIS HEALING BALM	Coco Oil, Teatree oil, Beeswax, Cannabinoids				
HEMPERY TINTED LIP BALM	.25 oz Wine , Blush, Apricot				
HEMPERY HEMP COSMETICS	Mascara, Blush				
HEMPERY LIP BLAM	Cocoa butter, Beeswax, Hemp Seed Oil, Coconut Oil, Essential Oil of Peppermint				

POSITIVE MOMENTUM TRANSITIONING INTO CLINICAL DRUG DEVELOPMENT

Dr. Julius Garvey M.D., F.A.C.S, F.R.C.S.(C), F.I.C.S., F.A.C.Ph., F.A.C.C.W.S
Chief Medical Officer (CMO), Cannabis Science, Inc.

BRINGING IT ALL TOGETHER!

CBIS PRODUCT PIPELINE

CLINICAL DRUG DEVELOPMENT



DRUG NAME	INDICATION & DESCRIPTION	GLOBAL MARKET / YEAR	% MARKET SHARE GOAL / YEAR	DISCOVERY	PRE-CLINICAL	PH. 1	PH. 2	PH. 3	DRUG REVIEW
CS-S / BCC-1	Extract Formulations - 2500% Stronger, Varied for Skin Cancers and Other Topical Indications - Arthritis, Muscle Pain, Wounds	\$4.7 Billion	\$47 Million	2008	2009 / 2010				
CS-TAT-1	Extract Formulations - 2500% Stronger, Varied for HIV/ AIDS, Cancers, and Other - Rheumatism, Wounds, Skin	\$26.5 Million	\$265 Thousand	2008	2010 / 2011				
CS-NEURO-1	Extract Formulation - 2500% Stronger, Varied CBN Patent Formulations for Neurological Disorders and Other Indications	\$28 Billion	\$280 Million	2008	2012 / 2013	Poss. 2019			
CBIS-LC-001	Stage 4 Lung Cancer	\$17.9 Billion	\$179 Million	2017	2015	Plan 2019			
CBIS-PC-001	Pancreatic Cancer	\$2 Billion	\$20 Million	2017	2016	Plan 2019			
CBIS-PPC-001	Chronic Prostatitis (Chronic Pelvic Pain)	\$881.5 Million	\$8.815 Million	2017	2015				
CBIS-OCD-001	Obsessive Compulsive Disorder	\$18.3 Billion	\$183 Million	2017	2018				
CBIS-OBLD-001	Oro-Bucco-Lingual Dyskinesias	\$1.1 Million	\$11 Thousand	2017	2018				
CBIS-OS-001	Oxidative Stress	\$615.69 Million	\$6.1569 Million	2017	2018	Poss. 2019			
CBIS-PS-001	Psychosis/ Anxiety	\$18.3 Billion	\$183 Million	2008	2018 / 19	Poss. 2019			
CBIS-PTSD-001	Post-Traumatic Stress Disorder (PTSD)	\$7.2 Billion	\$72 Million	2008	2018 / 19	Poss. 2019			
CBIS-SD-001	Sleep Deprivation	\$680.4 Billion	\$6.804 Billion	2008	2018 / 19	Poss. 2019			
CBIS-SSA-001	Sickle Cell Anemia	\$4.82 Billion	\$48.2 Million	2017	2018				
CBIS-GAP-001	Global Anemic Pandemic, World's Most Widespread Nutritional Disorder	\$21.4 Billion	\$214 Million	2017	2018				

COLLABORATION RESEARCH AGREEMENT w/ DANA-FARBER CANCER INSTITUTE



MAIN GOAL: *“To develop and investigate the use of Cannabinoids for treatment of a variety of cancers, and investigate the synergistic impact of Cannabinoids when used together with standard and novel anti-cancer regimens.”*



TWO PUBLISHED ARTICLES IN FRONTIERS IN ONCOLOGY:

NANOPARTICLE DRONES TO TARGET LUNG CANCER
WITH RADIOSENSITIZERS AND CANNABINOIDS
(SEPTEMBER 2017)

17,705

Article views

98%

More views than all other Frontiers' articles

ENHANCING THE THERAPEUTIC EFFICACY OF
CANCER TREATMENT WITH CANNABINOIDS
(APRIL 2018)

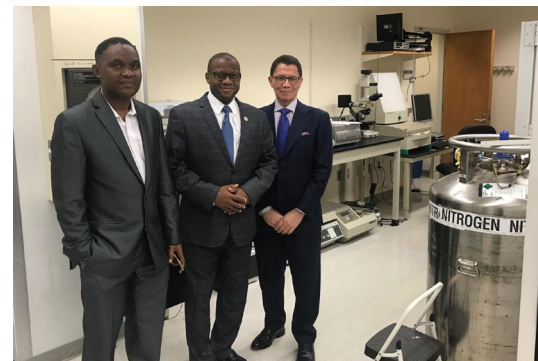
19,480

Article views

98%

More views than all other Frontiers' articles

COLLABORATION RESEARCH AGREEMENT w/ DANA-FARBER CANCER INSTITUTE



Other Achievements:

- DEA approval allowing investigations of other CBD/THC strains
- New Phytomedicine Research Collaboration with DFCI on “Blood from Plants”
(See exhibit at the summit)

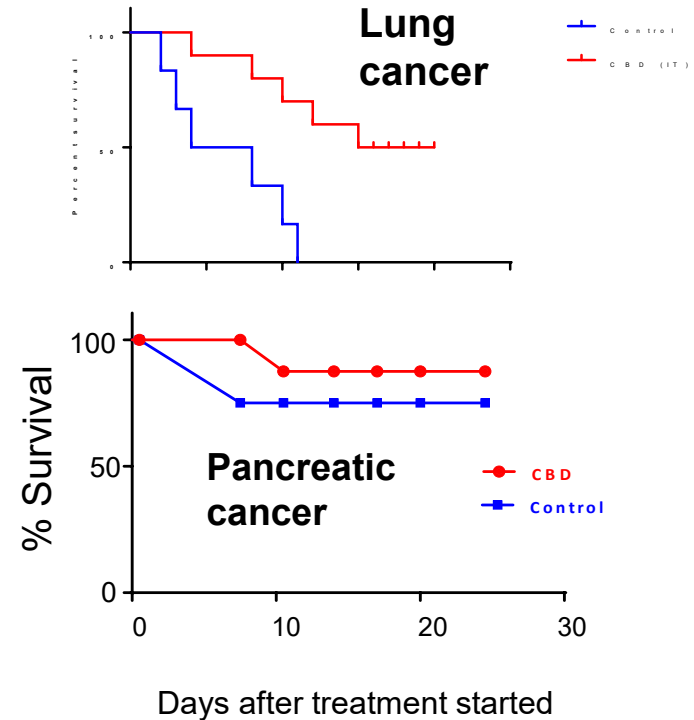


CANNABINOIDS IN LUNG AND PANCREATIC CANCER TREATMENT

Some results

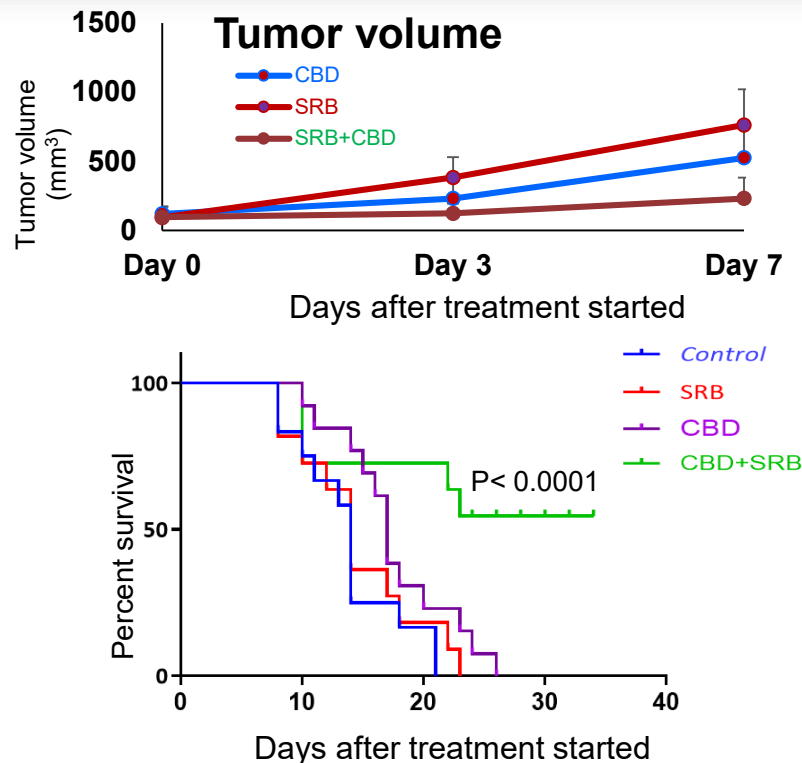
Cannabinoid (CBD): Inhibits Cancer Growth

Increase survival duration and number in lung and pancreatic cancer mouse model



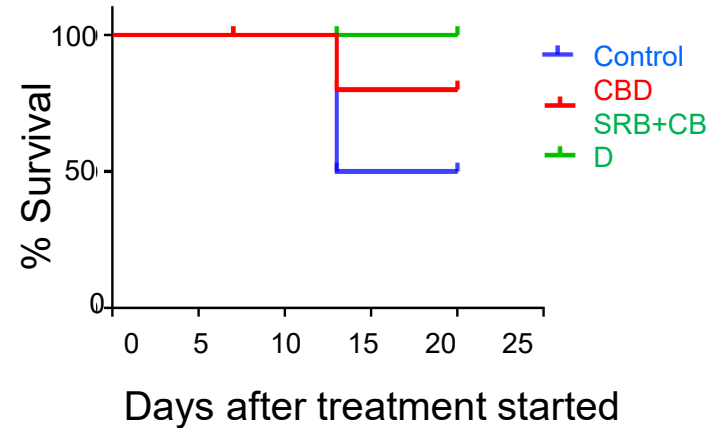
Cannabinoid (CBD): Inhibits Cancer Growth

Further increase survival duration and survival percent in lung cancer mouse model by sustain in-situ delivery of CBD using Smart Radiotherapy Biomaterial (SRB)



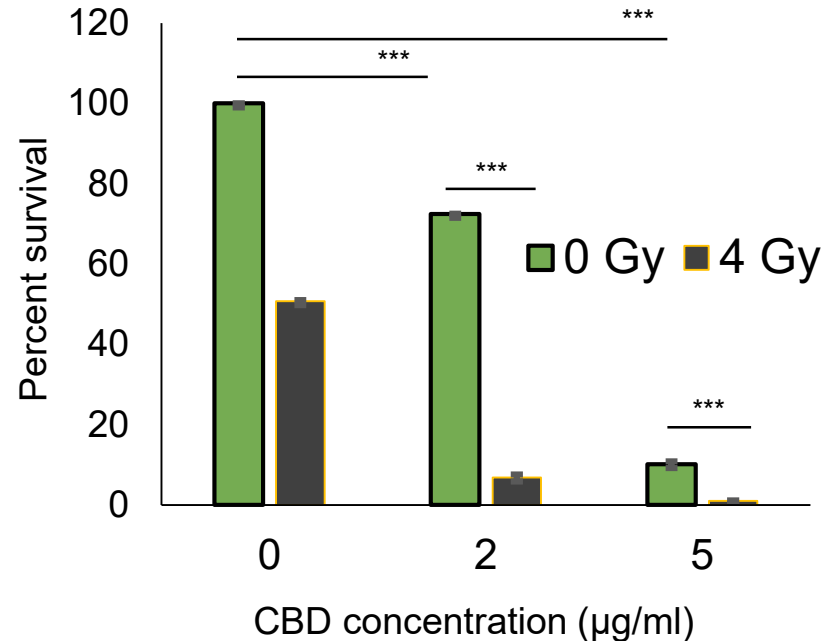
Cannabinoid (CBD): Inhibits Cancer Growth

Further increase survival duration and survival percent in a pilot study of pancreatic cancer mouse model by sustain in-situ delivery of CBD using Smart Radiotherapy Biomaterial (SRB)



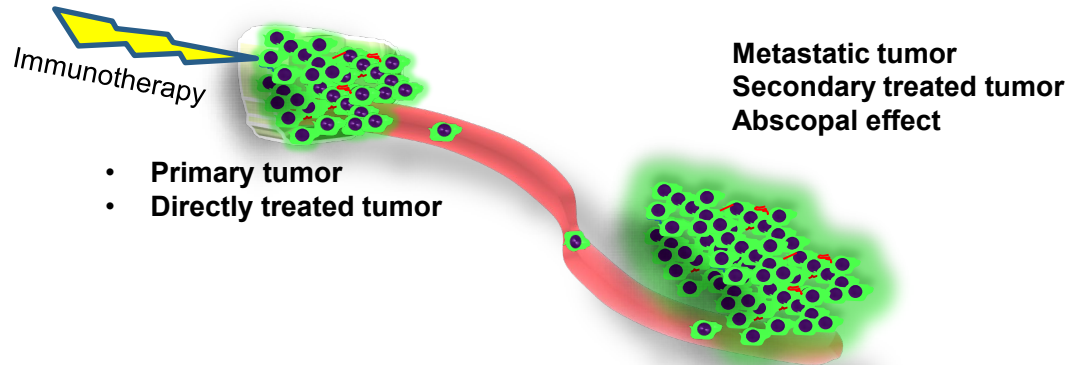
Radiotherapy (RT) enhances Tumor cell killing by CBD

In-vitro study:
Radiation enhances
anticancer effect of
CBD in human lung
cancer cells



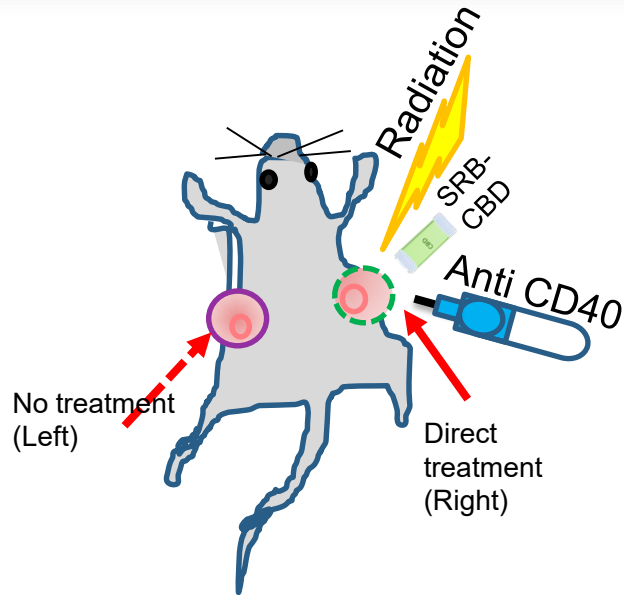
What is Abscopal Effect?

❖ It has been observed by Mole and others that treatment at one site may lead to regression of metastatic cancer at other sites, which were not treated; this phenomenon is called ‘abscopal’ effect.

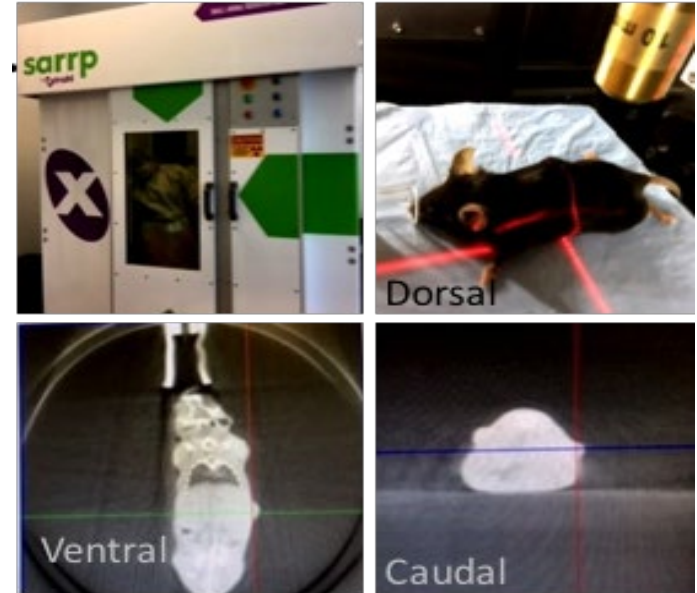


❖ Immunotherapy: can enhance the abscopal effect of radiation

Cannabinoid (CBD): Enhance Abscopal effect?

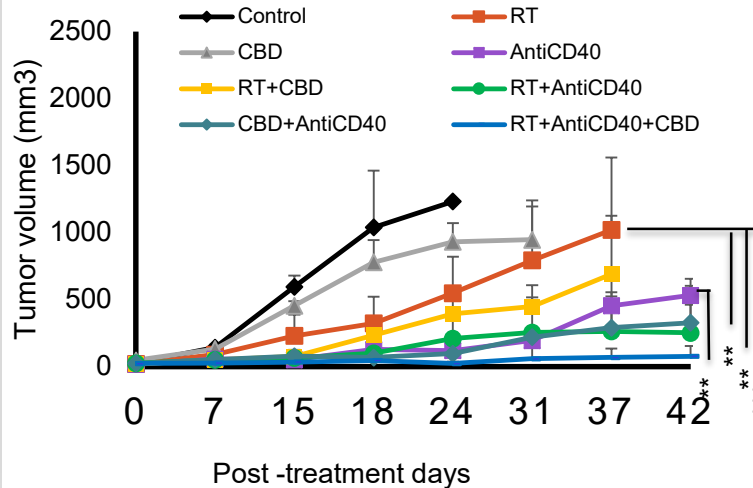


Dorsal view of a mouse
with two tumors

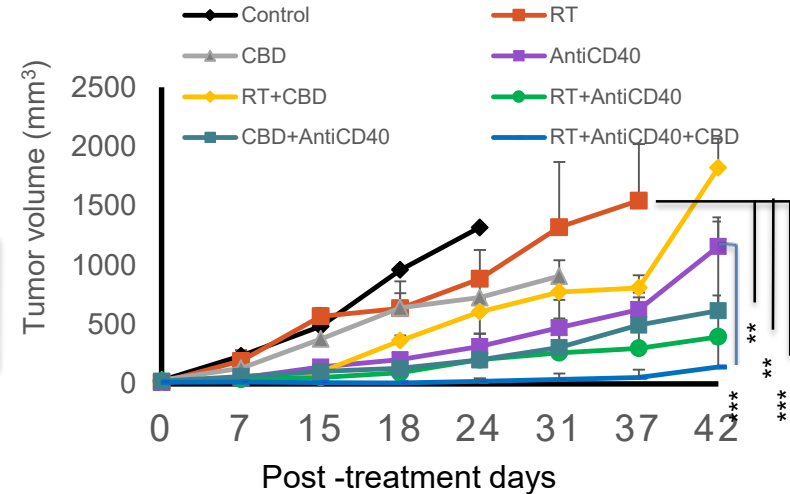


CBD – Abscopal Effect (KPC) Medical Cannabis extracts can boost the abscopal effect leading to untreated or metastatic tumor regression

Treatment side-KPC

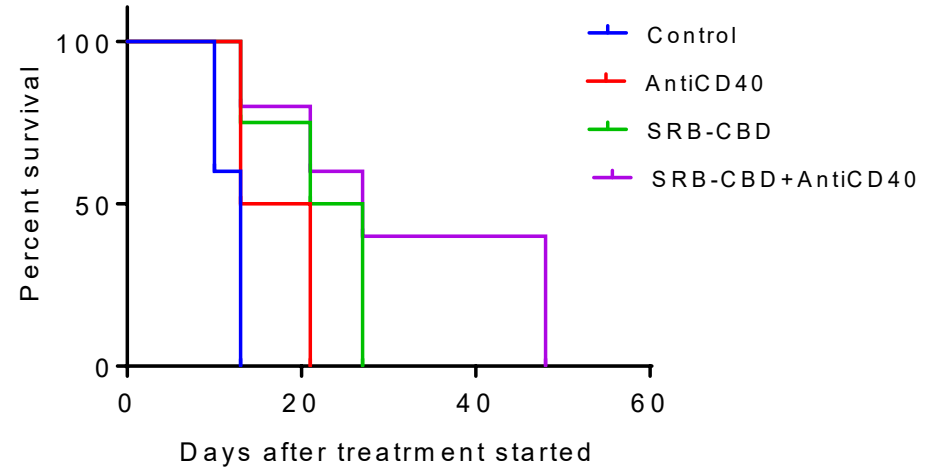


Abscopal side-KPC



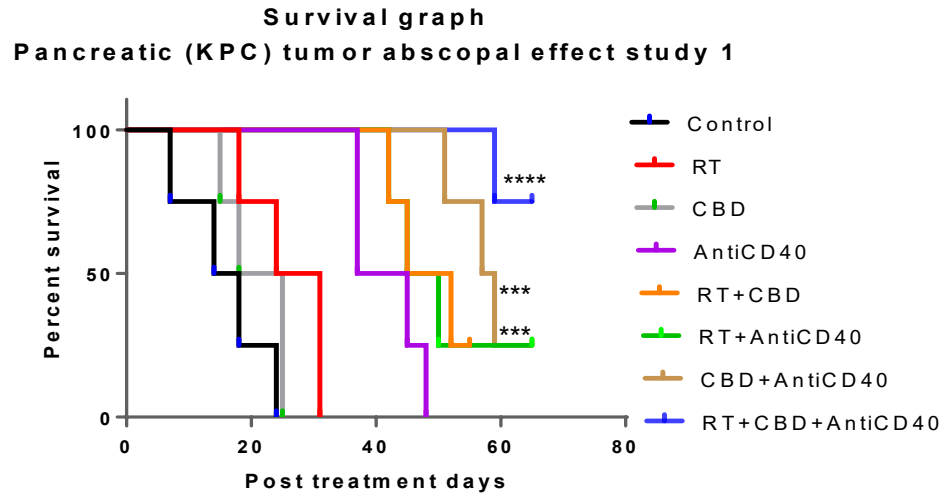
Cannabinoid (CBD): Enhance Abscopal effect?

In-vivo study: AntiCD40
along with SRB-CBD for
Abscopal effect

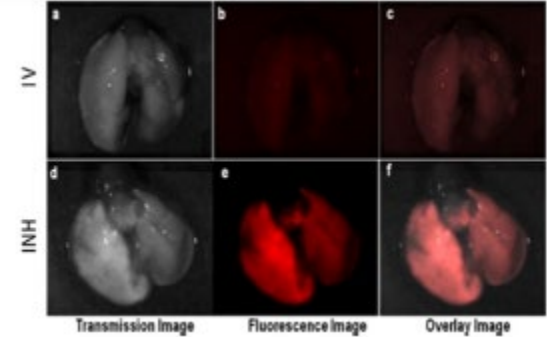
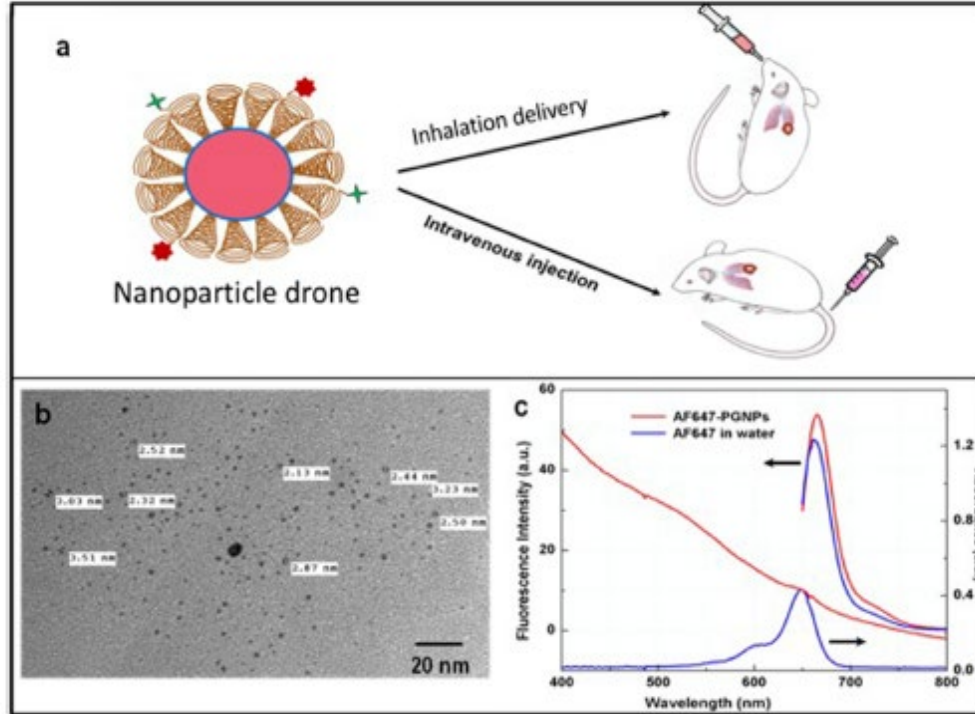


CBD – Abscopal Effect (KPC)

Major increase in survival when using Medical Cannabis Extracts in Combination with immunoadjuvant



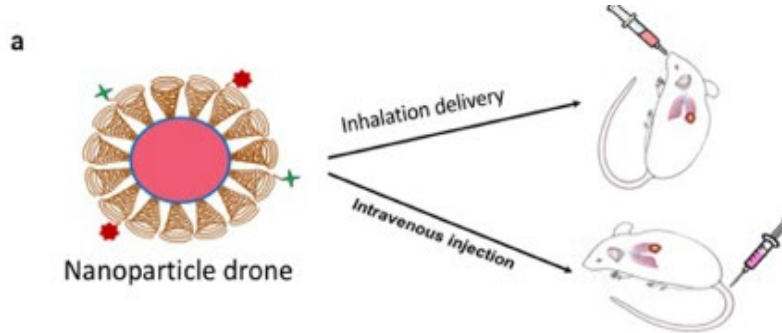
USING SMART DELIVERY TECHNOLOGIES



Inhalation
delivers more
directly to tumor

FIGURE 1 | (A) Cartoon showing both Intravenous and Inhalation (INH) delivery of nanoparticle drones; **(B)** TEM Image of lung tumor targeted with drones; **(C)** absorption spectra of drone technology uniquely customized for INH delivery to lung tumors.

USING SMART DELIVERY TECHNOLOGIES IMPLEMENTATION

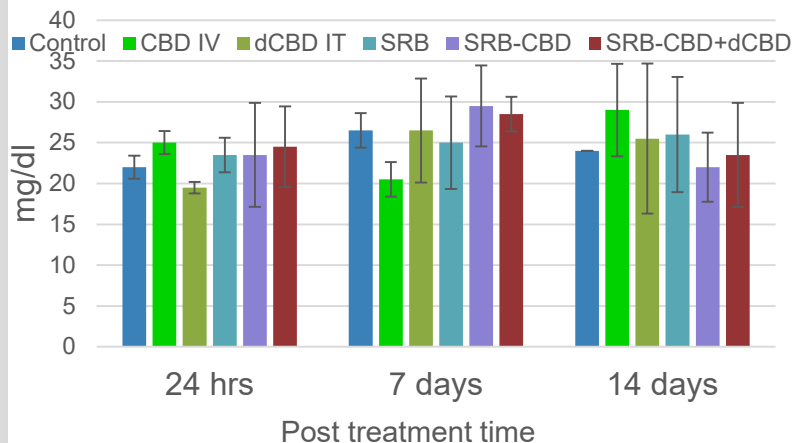


From Bench to Bedside

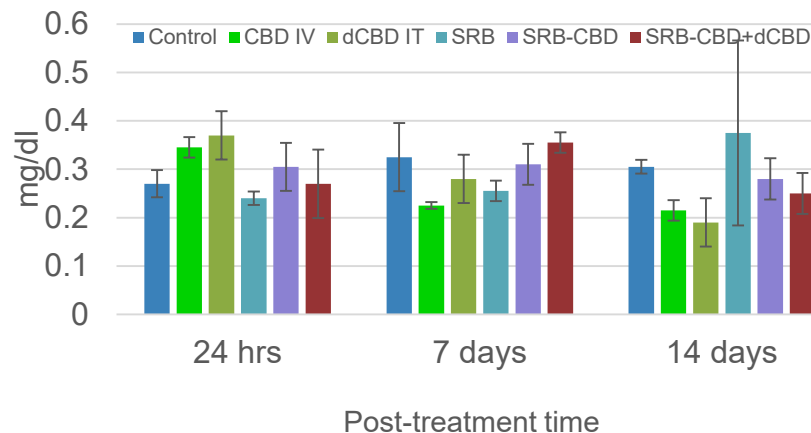
CBD-toxicity study – Pancreatic cancer model (Panc-02)

Relativity No Toxicity

Serum Blood Urea Nitrogen



Serum Creatinine



CBD (Cannabinoid): stock solution- 1gm/ml dissolve in methanol (Sigma).

Control: No treatment given

dCBD: direct injection of CBD (100 µg)

SRB-CBD: CBD (2ug) loaded in smart radiotherapy biomaterial (SRB)

CBD IV: tail vein injection of CBD (100 µg)

SRB: Methanol (2ug) loaded in smart radiotherapy biomaterial (SRB)



Next Steps

- Phase 1 clinical trial
- Investigate other indications
- Combine with Justicia compounds for sickle cell disease (see Justicia study results and exhibit)

EXAMPLES OF ADDITIONAL CBIS RESEARCH COLLABORATIONS

Stellenbosch (South Africa)

- CBIS and Stellenbosch University are jointly investigating the use of cannabinoids to treat chronic pelvic pain disorder/chronic prostatitis, and other indications.

North-West University (South Africa)

- CBIS and North-West University will jointly investigate the use of cannabinoids to treat OCD and PTSD.

Stellenbosch (Nigeria)

- CBIS and Stellenbosch University are investigating the potential beneficial effects of cannabidiol on oro-bucco-lingual dyskinesias, oxidative stress, and psychosis using animal studies and a clinical trial.
- Additionally, a protocol is currently being developed for a PTSD clinical trial.

CBIS' CBN Patent

- U.S. Patent No. 9,763,991 for the “Compositions of Cannabinol (CBN) for Treatment of Various Neurobehavioral Disorders, including Sleep Disorders”
- Composition for use of CBN in the treatment of neurobehavioral disorders.
- Plant extracts derived show particularly beneficial effects against sleep disorders, in particular insomnia; anxiety disorders, including ADHD; and PTSD.
- CBIS is negotiating licensing and marketing agreements.

DANA-FARBER/CANNABIS SCIENCE COLLABORATION 2

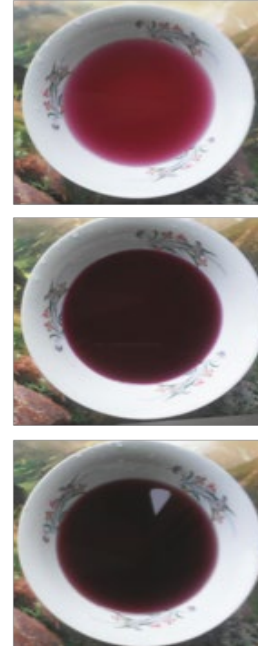
BLOOD FROM PLANTS

BLOOD FROM PLANTS

A



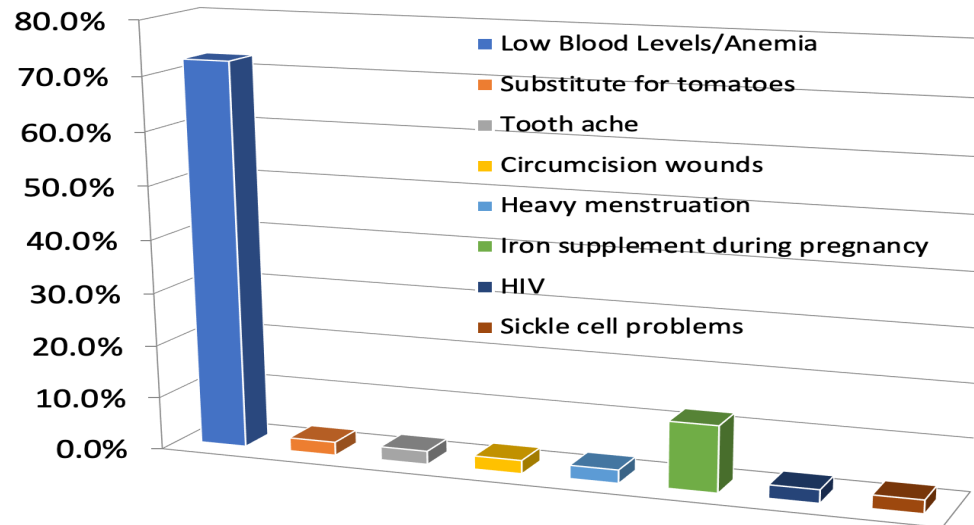
B



BLOOD FROM PLANTS

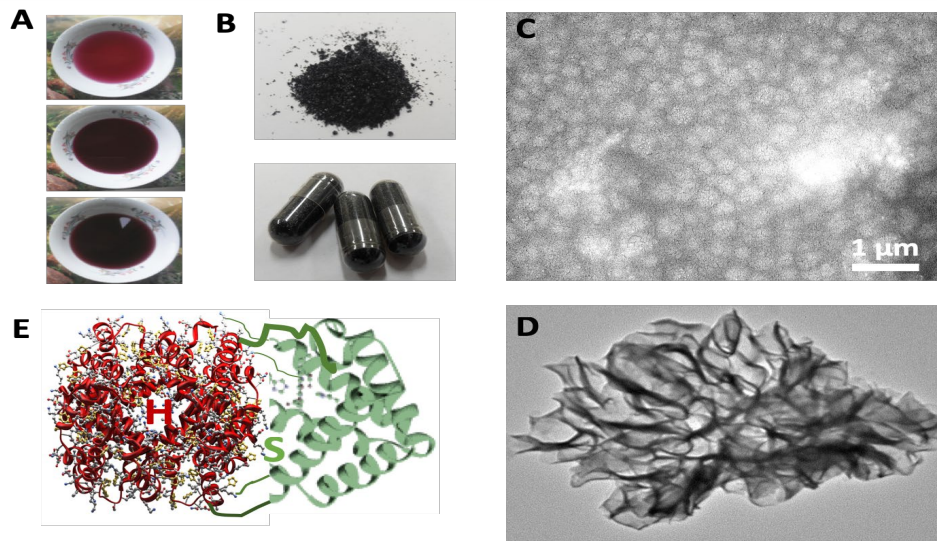
Used by populations but with no scientific evidence-base

To remedy:



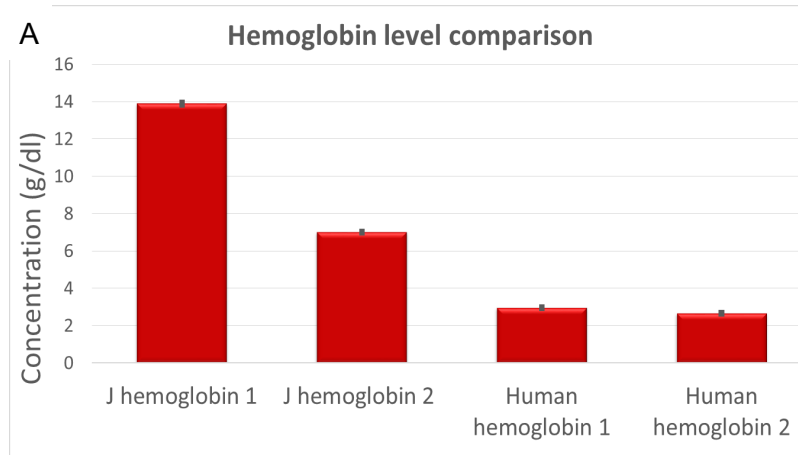
Results from Harvard collaboration with Sts Stephen and Paul's Foundation Cameroon

BLOOD FROM PLANTS



Structure results from research at Harvard Medical School with DFCI IP
Collaboration agreement with CBIS

BLOOD FROM PLANTS



Many times more
Hemoglobin than in
humans

Function results from research at Harvard Medical School with DFCI IP
Collaboration agreement with CBIS

BLOOD FROM PLANTS

Analyte	Concentration ($\mu\text{g/ml}$)	Measured blood gas values at 37°C		
		PH	pCO ₂	pO ₂
Al	1.14	7.75	27.8 mm Hg	71 mm Hg
Ca	41.48			
Cr	1.12			
Fe	2.64			
K	167.5			
Mg	20.44			
Mn	0.14			
Na	63.44			
P	3.04			
Pb	0.32			
Si	1.94			
Sc	0.08			
Ti	0.06			
V	0.04			

Remarkably similar composition
of elements found in blood

Function results from research at Harvard Medical School with DFCI IP
Collaboration agreement with CBIS

BLOOD FROM PLANTS

Next Steps:

- Products launching this summer (see exhibit for a sample)
- Development of blood substitute
- Nutraceuticals (Nature based)
- *Long live cows!* Highly nutritious organic foods which taste the same as if they had meat because of the rich hemoglobin/blood from plants
- Sick cell disease, etc.



2. CBIS EDUCATIONAL DEVELOPMENT

CBIS, Harvard Medical School's Global Health Catalyst, Elpasso Farms, and ASU form a collaboration to establish a platform through which faculty at Harvard and partner institutions will provide the best in online and on-site hybrid education and training.



ASU

Focus on Agriculture - R&D of Hemp Cultivation; 5 departments offering 37 programs



ELPASSO FARMS

Will offer agriculture, medicine, law, and business programs. R&D using cannabinoids. Seed incubation, growth, and cultivation.



INTERNATIONAL UNIVERSITY OF MANAGEMENT OF NAMIBIA (IUM)

Memorandum of Agreement and Cooperation for joint educational and research programs.



UNIVERSITY OF STELLENBOSCH

Collaboration Research Agreement to develop cannabinoid-based medications to treat chronic pain and other indications.



RCDU

Offers affordable entrepreneurial programs with incubator options

CFA

African Initiative focused on drug development, food safety, policy, education, and communications.



CBIS NATIVE AMERICAN ECONOMIC DEVELOPMENT PLAN

- Partnership with Free Spirt Organics Native American Corporation, HRM Farms, RCDU, and ASU Department of Agriculture in San Joaquin County
- ASU and RCDU offer 5 Departments and 37 certification programs
- ASU's Department of Agriculture will be conducting cannabinoid drug research & development from the industrial Hemp plant, targeting critical ailments
- Research, development, cultivation, and testing will be integrated into the school's programs
- CBIS has provided many jobs to the community from the University site creation and Hemp Farm cultivation



AMERICAN STATES UNIVERSITY
DEPARTMENT OF AGRICULTURE INDUSTRIAL HEMP RESEARCH PROJECT



2017, 250-ACRE NATIVE AMERICAN CBIS & FSO NAC PROJECT
AGRICULTURAL RESEARCH, EDUCATION, ECONOMIC DEVELOPMENT

AMERICAN STATES UNIVERSITY (ASU)
info@americansu.com
www.americansu.com

This project provides educational and economic development plans, based on target needs of the community, through the creation of universities and cultivation facilities.



FREE SPIRIT
ORGANICS NATIVE
AMERICAN
CORPORATION (FSO NAC)



FREE SPIRIT

RAYMOND C. DABNEY
UNIVERSITY (RCDU)
raymondcduniversity.com
www.rcduniversity.com



HRM Farms, Inc.

HRM
FARMS

CANNABIS SCIENCE
(CBIS)
info@cannabiscience.com
www.cannabiscience.com



DEPARTMENT OF AGRICULTURE INDUSTRIAL HEMP RESEARCH PROJECT

The American States University offers a combined thirty-seven state approved certification and degree programs housed within five departments, including its Bachelor of Business Administration, Master of Business Administration, and Doctor of Business Administration programs.

The American States University Department of Agriculture's Alternative Medicine program, with focus on cannabinoid drug development using proven extraction methodologies derived from the Industrial Hemp plant, is certainly attracting more attention in light of the recent federal action and recent shifts in public perception about cannabinoids in general – particularly as medical applications become paramount to the general public who want 100% natural alternatives to manufactured drugs for an extensive list of critical ailments and palliative care needs.

Working with cannabinoid drug development experts Cannabis Science and their Global Consortium of drug development initiatives and research collaborations, Cannabis Science has also had successful laboratory work using Nanoparticle Drones to target Lung cancer with radiosensitizers and cannabinoids as evidenced and recently published in the respected medical journal Frontiers in Oncology.

ALTERNATIVE MEDICINE RESEARCH

Cancer Epilepsy
PTSD Autism
Chronic Pain HIV/AIDS
Arthritis
Parkinson's Disease

PROGRAMS CURRICULA

- Regulatory Compliance
- Company Creation
- Company Structure
- Department Management
- Team Management
- Planting and Harvest
- Formulation Creation
- Manufacturing
- Wholesale Distribution
- Observational Studies
- Clinical Studies
- Retail, Sales and Marketing

EDUCATIONAL DEVELOPMENT - UNIVERSITIES

AMERICAN STATES UNIVERSITY
1 DEPARTMENTAL & 17 STATE APPROVED CERTIFICATION AND DEGREE PROGRAMS

Alternative Medicine, Hemp Oil, Alternative Botanicals, Cannabis for Medical, Clothing Textiles, Automobile Parts, Paper, Rope & String, Business Administration & Certified Professional Programs

UNIQUE STRUCTURE OF IN-CLASS, ONLINE, BLENDED WORK TRAINING

RAYMOND C. DABNEY UNIVERSITY
LAW, BUSINESS, HEALTHCARE
ENTERPRENEURIAL, JOB CREATION PROGRAM
ONLINE & IN-CLASS TRAINING

EDUCATION, ECONOMIC DEVELOPMENT AND JOB CREATION



FUNDAMENTAL AREAS OF ECONOMIC GROWTH:

Universities and site services including, laboratory facilities for research & development.

OTHER KEY FUNDAMENTALS DEPENDING ON THE DEMOGRAPHICS:

Housing, apartments, dormitories, and retail services; restaurants, gas stations, grocery stores, clinics, pharmacies, and retail strip malls

ASU
FSO NAC
RCDU
HRM FARMS
CBIS
ARCC LEGAL ADVISORS

PROPERTY
LOCATION:
San Joaquin Severino
Tribal Free Land MBS,
California

Vertical-integration allows us to provide many jobs throughout the community in agriculture, education, healthcare training, construction, and general retail services.

- Academic and vocational training, covering each applied industry.
- Agricultural research.
- Development of healthcare infrastructure, including hospitals and health centers
- Pharmaceutical and Alternative Medicines development.
- Creation of a sustainable, food security system that is based on sound agricultural practices that produce sufficient food for consumption and that are designed to reduce poverty and allow for real farm-to-table programs.
- Development of water management systems.
- Development of waste management systems that reduce the prevalence of critical risk factors for infectious diseases.
- Investment in communications infrastructure, to include satellite, internet, mechanical device development, and cellphone infrastructure, and
- Support for policy, regulatory, and jurisdictional environments, as they pertain to public healthcare, agriculture, education, job creation, and most important, on the job training oriented for success.

To-date: approximately 30 part-time workers hired. Upcoming Harvest Prospect: 50 -75 workers to be hired. Year Round Harvest Prospect: Hundreds of full-time workers to be hired.



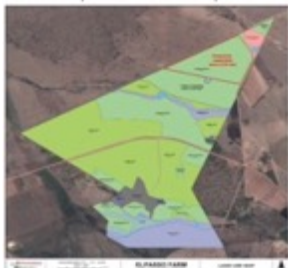
HRM
FARMS

CBIS AFRICAN ECONOMIC DEVELOPMENT PLAN

FIRST AFRICAN DEAL - ELPASSO FARMS COLLABORATION

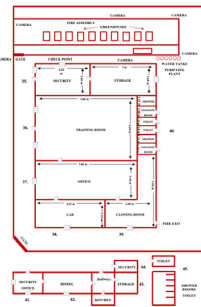


Elpasso farm Map



ELPASSO
FARMS

- Partnership with Dr. Brylyne Chitsunge and Elpasso Farms in South Africa
- Elpasso will donate land to develop a new University in South Africa to specialize in agriculture, medical, law, and business programs
- The University will research, develop, cultivate, test, manufacture, and produce cannabinoid therapies
- The site will be responsible for seed incubation, growing, and cultivation of a variety indigenous plants including cannabis and hemp.



FUTURE UNIVERSITY PLANS



BRINGING IT ALL TOGETHER

FUTURE PLANS TO INTEGRATE ALL UNIVERSITY PROGRAMS

- Agriculture
- Medical
- Law
- Business
- Technology
- Real Estate Development
- Retail
- Entrepreneurial (Job Creation)
- Professional Certifications
- Motion Picture & Media
- Political Environments
- Mining
- Banking

3. CBIS JOB CREATION

BRINGING IT ALL TOGETHER!

Entrepreneurial programs and vertical integration.

- JOB CREATION due to the effectiveness of the EDP.
- University programs – agriculture, medical, law, business, medical, technology, media
- Students graduating with entrepreneurial skills to create their own jobs
- Solar power stations
- Highways, roads and site services
- Healthcare Infrastructure
- Water & Waste Management Systems
- Technology & Communications Infrastructure
- Housing, Apartments, Dormitories
- Retail Services – Book Stores, Grocery Etc.



CBIS AFRICA DEVELOPMENT PLAN

BRINGING IT ALL TOGETHER!

DRUG DEVELOPMENT

- FDA, State-By-State, Over the Counter markets for: Cancer, PTSD, Chronic Pain, Arthritis, Parkinson's Disease, Epilepsy, Autism, and HIV/AIDs.

JOB CREATION

- Entrepreneurial programs and vertical integration including site creation, healthcare infrastructure, water & waste management infrastructure, technology & communications infrastructure, housing (apartments, dorms, etc.), and retail services.

EDUCATION

- Access to our consortium of affordable University programs, inclusive of scholarships and additionally subsidized education packages.



CBIS AFRICA DEVELOPMENT PLAN

SECOND AFRICAN DEAL - MANDELA QUNU FOOD SECURITY



ELPASSO
FARMS

A sustainable farming venture in his impoverished home town of Qunu in the Eastern Cape, where Nelson Mandela is buried



- Deal is introduced and championed by Elpasso Farms
- Operated by Dr. Brylyne Chitsunge - the Pan African Ambassador for Food Security In Africa - and a tireless advocate for food security
- Aims to develop a platform for Agricultural Stakeholders to work within the Qunu Community on Mandela's farm ensuring the development of agriculture within South Africa

CBIS ECONOMIC DEVELOPMENT PLAN CREATING JOBS IN CONSTRUCTION

1. Land Excavation
2. Solar Panels
3. Water System
4. University Construction
5. Warehouse
6. Housing
7. Greenhouses
8. Strip Mall
9. Gas Stations
10. General Services





CBIS ECONOMIC DEVELOPMENT PLAN

JOBS CREATED FOR REAL ESTATE MANAGEMENT

- APARTMENT COMPLEX
 - + Open for students and professors
- STUDENT DORMITORIES
 - + State of the Art Equipment
- MEDICAL FACILITIES
 - + Product Research & Development
 - + Treatment center for patients

CBIS ECONOMIC DEVELOPMENT PLAN

JOBS CREATED FOR AGRICULTURE

CANNABIS ASSOCIATED JOBS

We will run a complete vertically integrated model.

Cannabinoid Operations Model will include:

1. Economic and Job Creation
2. Cultivation Center
3. Extraction Laboratory
4. Commercial Kitchen
5. Product Development
6. Company Branding & Recognition
7. Marketing & Advertising
8. Distribution



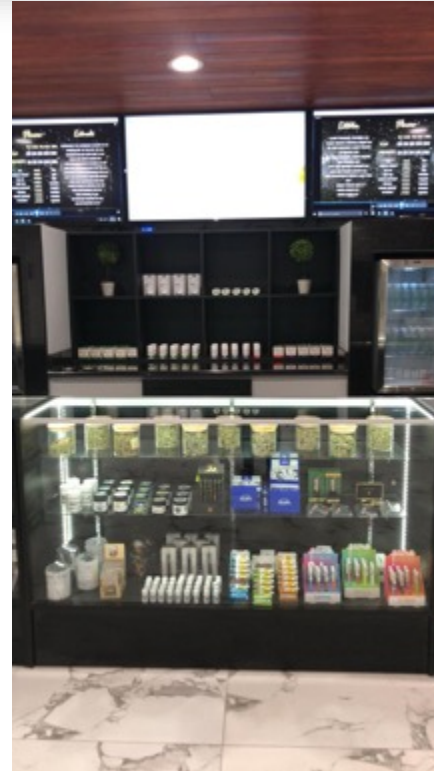
CBIS ECONOMIC DEVELOPMENT PLAN

JOBS CREATED - PRODUCT MANUFACTURING



CBIS ECONOMIC DEVELOPMENT PLAN

JOBS CREATED IN CBIS MEDICAL CENTERS & CBIS PHARMACIES





WE WANT YOU TO GET INVOLVED!

CBIS FIGHTS TO END OPIOID DEATHS



**GET
EDUCATED**

CANNABIS IS USED AS A GATEWAY OUT OF OPIOID ADDICTION!

In conjunction with "iCannabinoid, We The People" campaign, CBIS aims to educate and help eradicate opioid deaths by replacing opioids with Cannabinoids - pills, extracts, tinctures, sprays, inhalers, and others that have great potential to end opioid deaths.



iCannabinoid

**JOIN OR CREATE AN ACTION GROUP AT
iCannabinoid.com TODAY!**

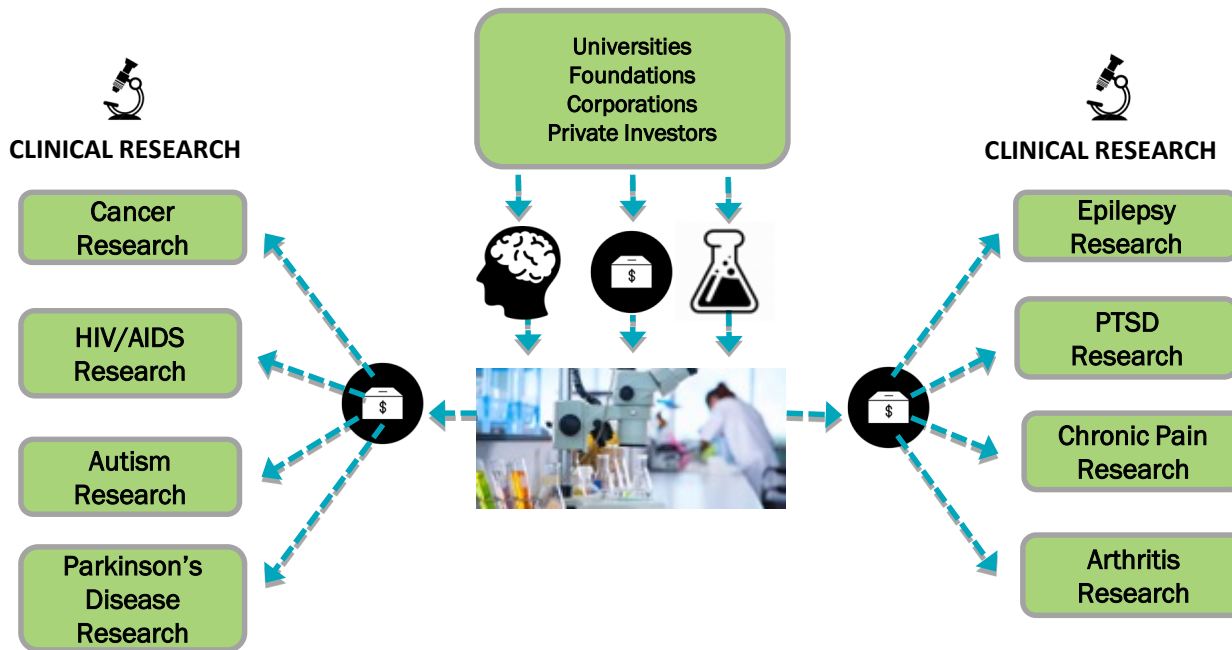
www.iCannabinoid.com



CONNECT, LEARN, SHARE!

- Creating Action Groups on specific topics to share information
- “My Health” Module for tracking your life
- Join the Ambassador Program – this is where we connect learn and share

www.iCannabinoid.com



Thank You for Helping us Bring it all Together !!!